

**Preferred Contracts Limited Acoustic and Design**

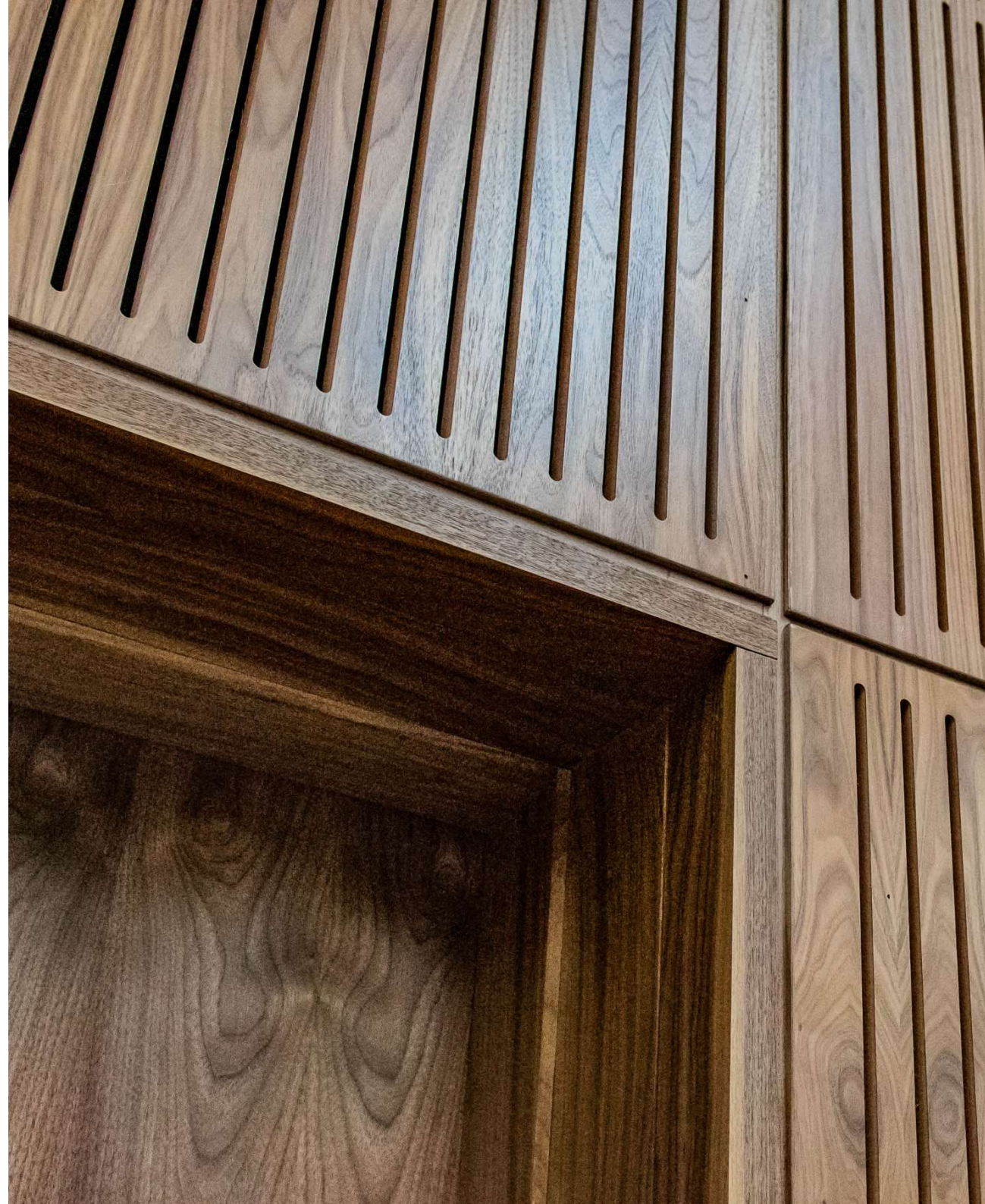
**Absorption Product:**

**Optic Range – Slotted Acoustic Panels**

## Contents:

---

- 01 Slotted Acoustic Panels**
- 02 Product Specification**
- 03 Fixing Method**
- 04 Face Finishes**





## 01 Slotted Acoustic Panels

---

Our slotted acoustic wall panels are an attractive sound control solution.

- Slotted acoustic panels give a durable, attractive sound absorbing surface which is suitable for many spaces and for either walls or ceilings.
- You can select from many slotted patterns or design your own and the finish options are almost endless.
- Slotted timber acoustic panels are typically installed on to battens with our secret fixing system and even shadow gaps.

### **Suspended Ceilings**

For ceilings we use a suspended ceiling tile version, which is easily removable and acts to conceal a standard T grid system.

Alternatively, an MF system can be used and similar mounting to wall panels can be achieved.

## 02 Product Specification

### NBS REF: K13 PCL Optic Slotted Acoustic Panels

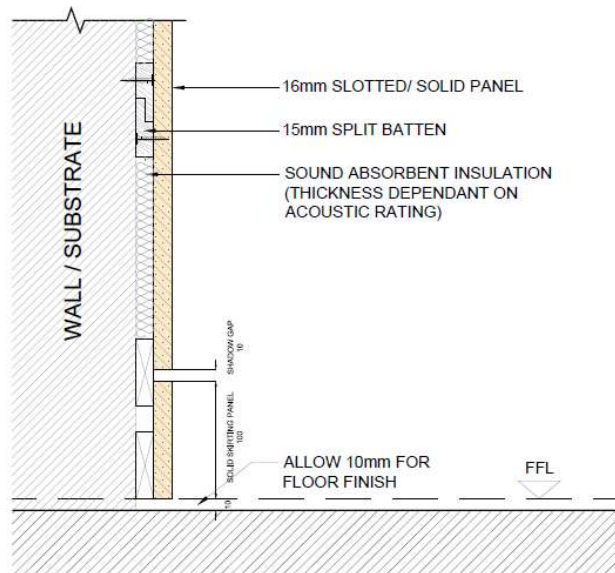
Product:	PCL Optic Range Slotted Acoustic Panels
Manufacturer:	<b>Preferred Contracts Limited Acoustics and Design</b>
Web:	<a href="http://www.preferredacoustics.com">www.preferredacoustics.com</a>
E-Mail:	<a href="mailto:info@preferredcontracts.com">info@preferredcontracts.com</a>
Tel:	+44 (0) 1992 893375
Address:	Preferred Contracts Limited Acoustics and Design Belfry House, Bell Lane, Hertford, Herts, SG14 1BP
Product Ref:	Solid Slotted Panels
Core Density:	High density (96Kg Sq.M) Fibreglass
Standard Size:	1200mm x 600mm & 2400mm x 1200mm
Thickness:	18mm
Edge:	Flat
Finishes:	Veneer, low pressure laminates, painted, plain
Fire Rating:	Class O MDF Core & Class O Lacquer
Construction:	18mm panel thickness with continuous peripheral frame and reinforced with horizontal batons, open weave acoustic fleece and mineral wool inlay. 2mm pvc edging to match. Split baton
Wall Mounting:	Split baton
Acoustic Performance:	Weighted Sound Absorption Value $\alpha_w$ -Ranging on Air Gap NRC 0.66. Sound Absorption Class B
Fibreglass Fire Resistance:	The fibreglass complies with GB/T 20284-2006, GB/T 20285-2006 & GB/T 14402-2006. This material was tested in a CNAS Accredited laboratory which is authorised to carry out testing on behalf of BSI.
Mechanical Properties:	No live load is permitted
Accessibility:	Demountable via mechanical fixing or secured via adhesive
Cleaning:	Wet wiping
Installation:	In accordance with standard details / project specific specification
Sound Insulation:	Not applicable



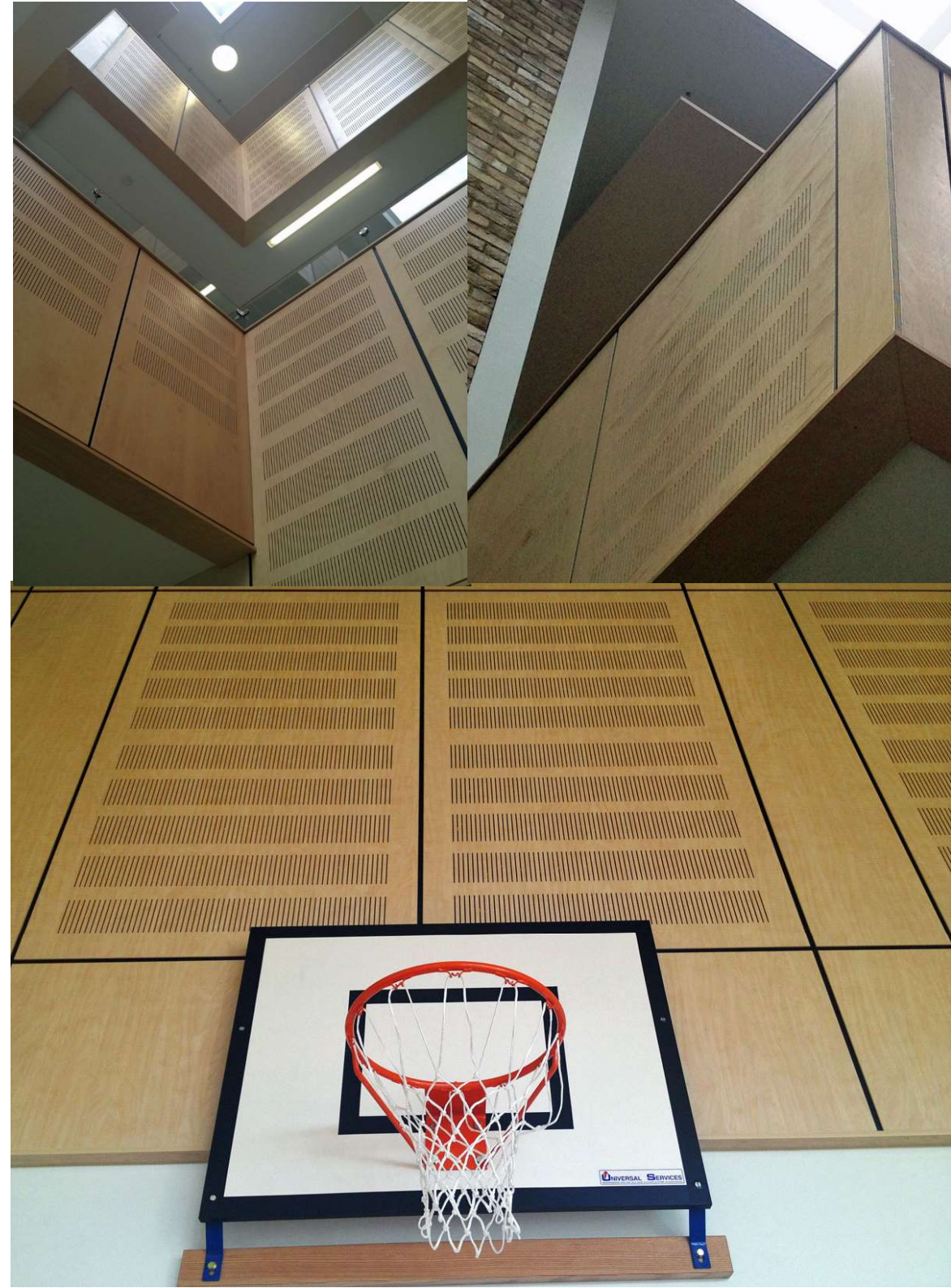
### 03 Fixing Method – Split Battens

Panels are pre-fabricated and secretly fixed on site using a split battens system. The split batten thickness will vary depending on the thickness of the insulation (Absorption class rating).

This system offers an accurate and high quality seamless finish.



1 TYPICAL FIXING DETAIL  
SCALE 1:2



# 04 Face Finishes

## PLAIN COLOURS



## DUHOSPAN BY GEAVES COLLECTION

## WOOD GRAINS



## DUHOSPAN BY GEAVES COLLECTION

Other finishes are available, including ply, laminates and veneers. Please contact us for more information.



Preferred Contracts Limited Acoustics and Design  
Belfry House, Bell Lane, Hertford, Herts, SG14 1BP  
T: +44 (0) 1992 893375

E: [info@preferredcontracts.com](mailto:info@preferredcontracts.com)

[www.preferredacoustics.com](http://www.preferredacoustics.com)  
[www.preferredcontracts.com](http://www.preferredcontracts.com)